

# Summary Development Statistics December 2002

## Approved Permits

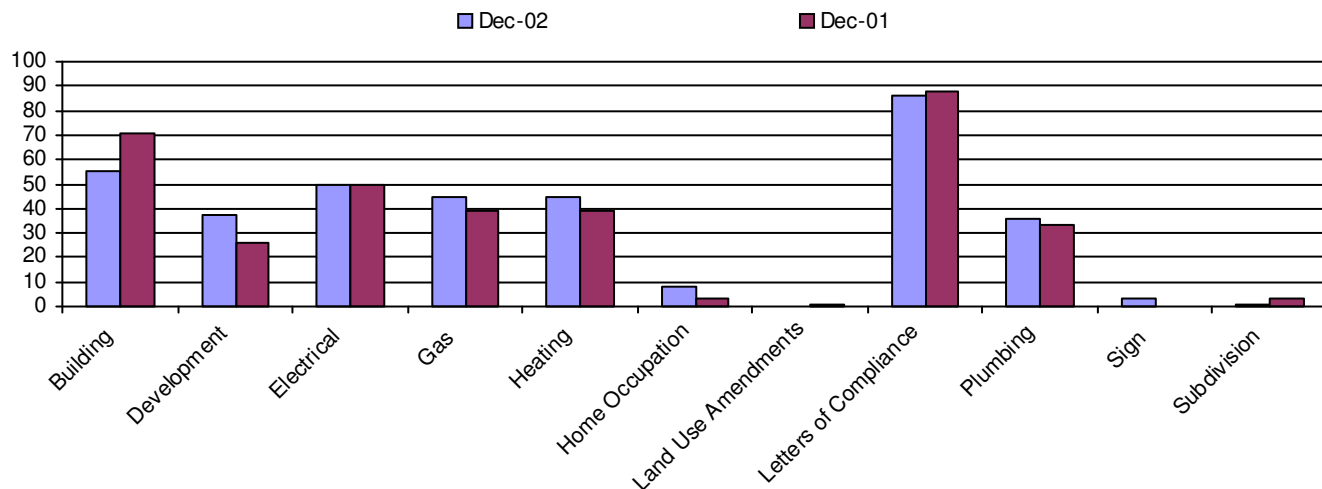
Permit Type	Number of Permits/Applications				
	Dec 2002	Dec 2001	2002 to Dec	2001 to Dec	YTD % Change
Building	55	71	1121	969	16%
Development	37	26	1030	848	21%
Electrical	50	50	962	814	18%
Gas	45	39	807	641	26%
Heating	45	39	572	498	15%
Home Occupation	8	3	77	81	-5%
Land Use Amendments	0	1	17	8	113%
Letters of Compliance	86	88	1238	1028	20%
Plumbing	36	33	708	589	20%
Sign	3	0	126	102	24%
Subdivision	1	3	48	45	7%
<b>Total</b>	366	353	6706	5623	19%

## Building Permit Breakdown

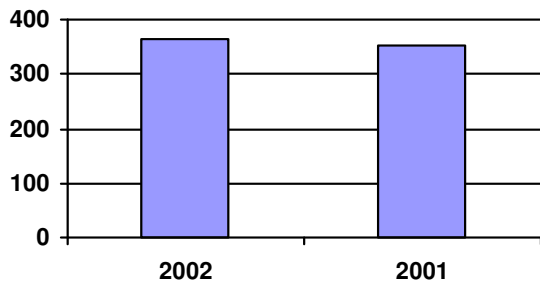
Building Type	Number of Permits (and Units)				Construction Value			
	Dec 2002	Dec 2001	2002 to Dec	2001 to Dec	Dec 2002	Dec 2001	2002 to Dec	2001 to Dec
Residential Alteration	10	7	122 (121)	111 (108)	\$66,925	\$18,050	\$1,142,093	\$1,127,519
Commerical Building	4 (3)	3	35 (34)	15 (14)	\$627,000	\$1,383,898	\$15,690,256	\$7,410,565
Demolition	0	0	12	7 (16)	\$0	\$0	\$0	\$3,001
Duplex	1 (2)	0	2	4 (5)	\$125,750	\$0	\$256,790	\$495,680
Four Plex	1 (4)	0	3 (12)	3 (12)	\$244,520	\$0	\$730,320	\$638,000
Industrial Alteration	1	1	3	3	\$176,000	\$117,000	\$321,000	\$135,600
Industrial Building	0	1	9	6 (5)	\$0	\$442,000	\$2,612,000	\$2,010,000
Institutional Alteration	1	1	3	5	\$28,000	\$40,000	\$595,900	\$1,175,000
Institutional Building	1	1	5 (64)	4	\$303,000	\$281,000	\$18,697,500	\$3,716,780
Commercial Alteration	11	19	71 (74)	89 (98)	\$721,955	\$1,462,872	\$9,116,673	\$6,799,574
Multiple Family Dwelling	1 (52)	2	11 (188)	4 (67)	\$4,200,000	\$3,600,000	\$13,540,545	\$9,500,000
Triplex	1	0	3 (5)	0	\$175,000	\$0	\$498,910	\$0
Residential Deck	6	9	191 (194)	187 (409)	\$10,200	\$10,000	\$307,981	\$292,926
Residential Garage	0	0	62 (64)	36	\$0	\$0	\$541,128	\$264,605
Rowhousing	0	0	0	0	\$0	\$0	\$0	\$0
Semi Detached	0	8	45	62	\$0	\$496,490	\$3,448,210	\$5,180,991
Shed	2	0	25 (24)	9	\$2,000	\$0	\$49,430	\$13,350
Single Family	7	5	129 (128)	136 (133)	\$632,450	\$439,085	\$10,301,140	\$10,739,942
Single Family -Garage	8	14	378 (384)	284 (292)	\$824,905	\$1,363,515	\$39,158,835	\$29,694,869
Townhouse	0	0	0	0	\$0	\$0	\$0	\$0
Manufactured Home	0	0	12	4	\$0	\$0	\$232,150	\$20,000
<b>Total</b>	55	71	1121	969	\$8,137,705	\$9,653,910	\$117,240,862	\$79,218,402

# Summary Development Statistics December 2002

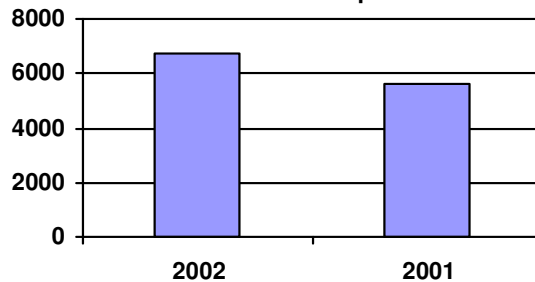
## Monthly Permit Totals- 2-Year Comparison



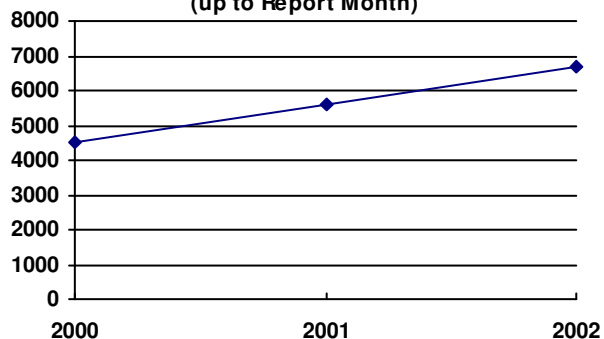
### Total Permits For Month



### Total Permits For Year up to Month



### Annual Number of Permits (up to Report Month)



### Annual Building Construction Value (up to Report Month)

