

Summary Development Statistics December 2011

Approved Permits

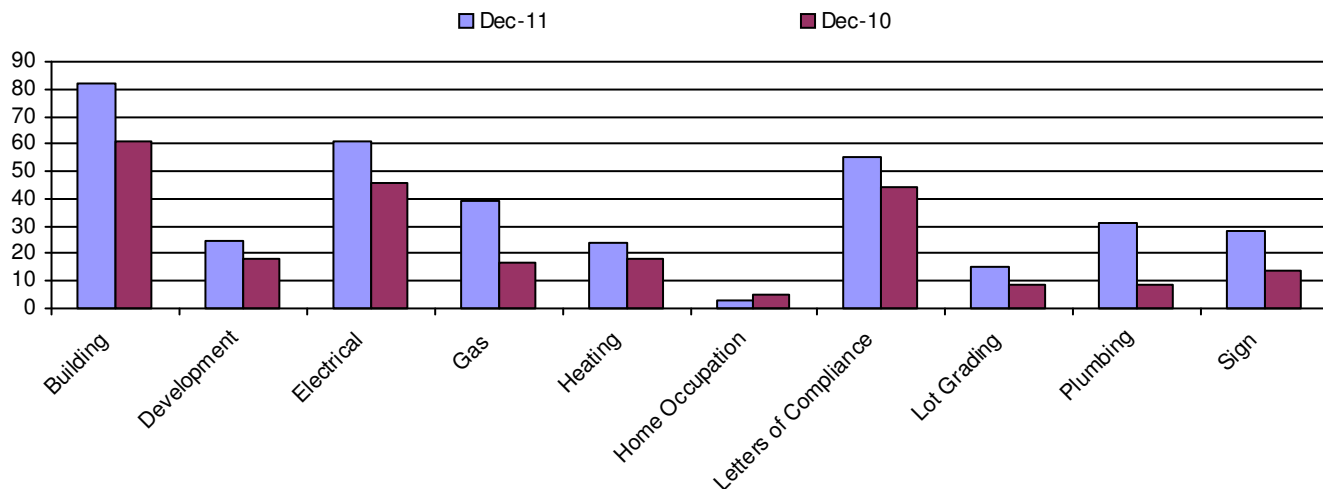
Permit Type	Number of Permits/Applications				
	Dec 2011	Dec 2010	2011 to Dec	2010 to Dec	YTD % Change
Subdivision	0	0	4	30	-87%
Sign	28	14	291	268	9%
Plumbing	31	9	447	402	11%
Lot Grading	15	9	359	187	92%
Letters of Compliance	55	44	874	894	-2%
Land Use Amendments	0	0	0	2	-100%
Home Occupation	3	5	120	125	-4%
Heating	24	18	350	349	0%
Gas	39	17	511	485	5%
Electrical	61	46	873	824	6%
Development	25	18	828	770	8%
Building	82	61	1058	1011	5%
Total	363	241	5715	5347	7%

Building Permit Breakdown

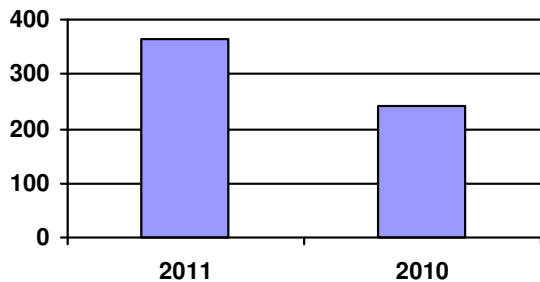
Building Type	Number of Permits (and Units)				Construction Value			
	Dec 2011	Dec 2010	2011 to Dec	2010 to Dec	Dec 2011	Dec 2010	2011 to Dec	2010 to Dec
Residential Alteration	27	25	227	249 (251)	\$236,000	\$236,000	\$3,044,040	\$2,319,669
Commerical Building	8	3	27	22	\$4,525,251	\$655,490	\$32,517,584	\$15,553,682
Demolition	1	3	12	12	\$10,000	\$0	\$495,000	\$0
Duplex	0	0	3 (4)	0	\$0	\$0	\$486,525	\$0
Four Plex	0	0	0	0	\$0	\$0	\$0	\$0
Industrial Alteration	0	0	4	2	\$0	\$0	\$650,774	\$64,836
Industrial Building	3	0	13	5	\$830,424	\$0	\$58,229,391	\$2,300,140
Institutional Alteration	3	1	11	8	\$1,355,000	\$3,573,113	\$6,006,205	\$5,553,388
Institutional Building	0	0	1	7	\$0	\$0	\$260,487	\$23,383,232
Commercial Alteration	10	7	95	88	\$1,450,200	\$872,500	\$21,246,307	\$10,534,228
Multiple Family Dwelling	0	0	0	2 (12)	\$0	\$0	\$0	\$1,177,800
Triplex	0	0	0	0	\$0	\$0	\$0	\$0
Residential Deck	12	9	249	258	\$27,000	\$9,000	\$488,000	\$312,000
Residential Garage	0	0	23	31	\$0	\$0	\$180,000	\$238,045
Rowhousing	0	0	0	0	\$0	\$0	\$0	\$0
Semi Detached	0	0	11	11	\$0	\$0	\$2,371,241	\$1,970,100
Shed	2	2	36	30	\$15,000	\$6,000	\$140,000	\$102,000
Single Family	5	0	58	41 (42)	\$897,165	\$0	\$10,430,896	\$7,461,897
Single Family -Garage	8	9	275	237	\$2,166,657	\$2,022,798	\$60,291,494	\$57,471,066
Townhouse	0	0	0	0	\$0	\$0	\$0	\$0
Manufactured Home	3	2	11	7	\$15,000	\$15,000	\$55,000	\$40,000
Total	82	61	1056	1010	\$11,527,697	\$7,389,901	\$196,892,944	\$128,482,082

Summary Development Statistics December 2011

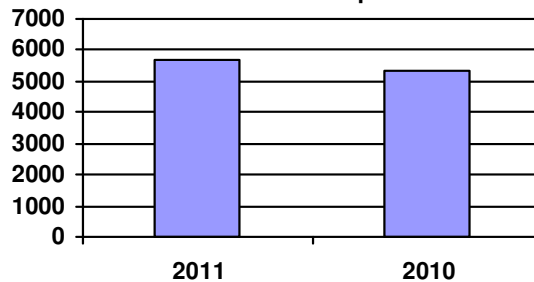
Monthly Permit Totals- 2-Year Comparison



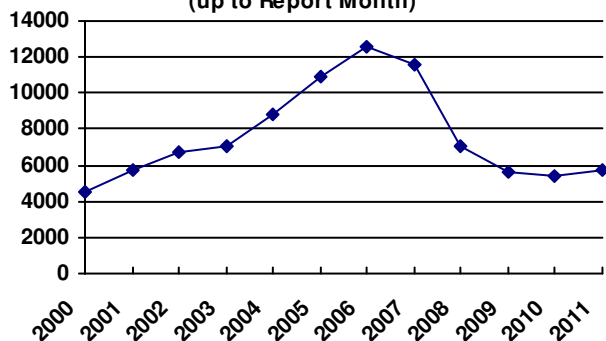
Total Permits For Month



Total Permits For Year up to Month



Annual Number of Permits
(up to Report Month)



Annual Building Construction Value
(up to Report Month)

